

Bosch Security and Communications  
Training Academy  
**Course Catalog**



**BOSCH**



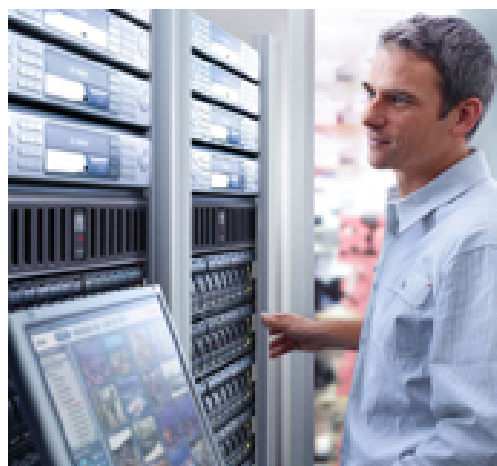
## Introduction

Bosch Security Systems is part of the Bosch Group and is a leading worldwide supplier of internationally approved electronic security and communications systems. Bosch Security Systems is committed to providing its customers with innovative, high quality solutions backed by world-class customer service and support.

By using our broad range of advanced products and time saving installation tools, you can design easy-to-install and dependable solutions from a single supplier, allowing you to reduce installation time and improve profits. The superior performance of Bosch products and our knowledgeable technical staff will help you minimize system downtime and reduce call back costs, leading to greater client satisfaction and retention.

At Bosch, design, innovation, and quality are a constant priority. Our investment in research and development is unsurpassed in the industry, helping you to maintain your competitive edge. And, we provide extensive training to make sure you understand how to get the most from our systems.

Four Bosch Security and Communications Training Centers of Excellence in Atlanta (Marietta), Georgia, Minneapolis (Burnsville), Minnesota, Lancaster, Pennsylvania, and San Jose, California, host a variety of training opportunities each month. Each course offered is outlined in the following pages, with information on prerequisites and potential CEUs. To find out more about Bosch Security and Communications Training and how we can support your development, please read on. If you have additional questions about Bosch Security and Communications training opportunities, please contact the Training Academy via email at: [FPCustomerTrainingWeb@us.bosch.com](mailto:FPCustomerTrainingWeb@us.bosch.com)





## Table of Contents

<b>Training Course Dates</b>	<b>5</b>
<b>Training Course Descriptions</b>	
<b>Access Control: Access Easy Controller 2.1</b>	<b>6</b>
<b>Access Control: ReadykeyPRO</b>	<b>7</b>
<b>Communications: Telex Radio Dispatch Certification Training</b>	<b>8</b>
<b>Communications: Electro-Voice IRIS-Net Technical Certification Training</b>	<b>9</b>
<b>Communications: Conferencing Certified Dealer Training</b>	<b>10</b>
<b>Communications: Praesideo Technical Training</b>	<b>11</b>
<b>Fire Systems: FPD-7024 Fire Control Panel</b>	<b>12</b>
<b>Intrusion: Conettix IP</b>	<b>13</b>
<b>Intrusion: G Series Control Panel with RPS</b>	<b>14</b>
<b>Video Solutions: DiBos 8 and Storage</b>	<b>15</b>
<b>Video Solutions: Bosch DLA 1200/1400 Video Storage Appliance</b>	<b>16</b>
<b>Video Solutions: Allegiant Matrix Switchers</b>	<b>17</b>
<b>Video Solutions: LTC 8900</b>	<b>18</b>
<b>Video Solutions: IP Encoders &amp; Cameras with System Design and VRM</b>	<b>19</b>
<b>Video Solutions: Bosch Video Management System</b>	<b>20</b>
<b>Video Solutions: IP Encoders &amp; Cameras with VIDOS Administration</b>	<b>21</b>
<b>Video Solutions: Bosch VIDOS Administration and IVA</b>	<b>22</b>



<b>Video Solutions: Extreme CCTV and Video Foundations</b>	<b>23</b>
<b>Online Learning Courses</b>	
<b>eLearning: AEC 2.1 Access Easy Controller</b>	<b>24</b>
<b>eLearning: Access Personal Edition (PE)</b>	<b>25</b>
<b>eLearning: FPD-7024 Fire Alarm Control Panel</b>	<b>26</b>
<b>eLearning: FPA-1000 Fire Alarm Control Panel</b>	<b>27</b>
<b>eLearning: Network Basics</b>	<b>28</b>
<b>eLearning: G Series Control Panels: GV3 What's New</b>	<b>29</b>
<b>eLearning: G Series Control Panels: GV2</b>	<b>30</b>
<b>eLearning: G Series Control Panels: GV2 User Operations</b>	<b>31</b>
<b>eLearning: Digital Video Recorder 400 Series</b>	<b>32</b>
<b>eLearning: 700 Series Hybrid/Network Recorder</b>	<b>33</b>
<b>eLearning: Divar XF Digital Video Recorder</b>	<b>34</b>
<b>eLearning: Bosch License Plate Capture Technology</b>	<b>35</b>
<b>eLearning; Introduction to Bosch HD Solutions</b>	<b>36</b>
<b>eLearning: Mastering the Art of Active-Infrared Night Vision</b>	<b>37</b>
<b>Training Regulations</b>	<b>38</b>
<b>Policies and Procedures</b>	<b>39</b>



## Training Course Dates

For information on Bosch Security and Communications Training dates, please visit our web site at: <http://training.boschsecurity.us/>. We regularly update our course offerings, so please check back regularly. You will also find helpful information on training center locations, including hotels with established corporate rates and directions.

## Training Course Descriptions

### Access Control

#### Access Easy Controller 2.1

##### Content

- Overview and Features
- Installation and Hardware
- Initial Controller Configuration
- System Configuration
- Adding Video Devices
- Input/Output Setup Application Scenario
- Access Easy Utilities

##### Prerequisites

Hands-on experience using troubleshooting equipment, including multimeters, wire strippers, and screwdrivers.

Students should also have basic PC skills.

##### Target Audience

This class is suitable for installers, service technicians, and project managers.

##### Purpose

This course will cover the advanced Access Easy Controller (AEC) functionality, as well as provide hands-on practice with the equipment and software.

##### No. of participants

Minimum of 3      Maximum of 8

##### Duration

3 Days

##### Location

Atlanta (Marietta), GA and San Jose, CA

##### Practical Content

At least 70% hands-on

##### CEU Credits

None available

##### Cost

Class requires compliance with the current Cancellation Policy





## Access Control

### ReadykeyPRO

<b>Content</b>	<ul style="list-style-type: none"> <li>▪ Introduction and Overview</li> <li>▪ Hardware Overview</li> <li>▪ Software Installation</li> <li>▪ System Programming</li> <li>▪ Additional Features</li> </ul>
<b>Prerequisites</b>	Networking aptitude and ability to successfully navigate various Microsoft OS platforms including file sharing, network browsing, users, and services. Familiarity of general access control terminology and applications and experience in configuring software.
<b>Target audience</b>	This class is suitable for technicians, project managers and IT professionals
<b>Purpose</b>	This course will provide in-depth instruction on the features and capabilities, software installation processes, troubleshooting techniques, and programming of the ReadykeyPRO Access Control System for a single site.
<b>No. of participants</b>	Minimum of 3      Maximum of 8
<b>Duration</b>	3.5 Days
<b>Location</b>	Atlanta (Marietta), GA or San Jose, CA
<b>Practical Content</b>	At least 75% hands-on
<b>CEU Credits</b>	None available
<b>Cost</b>	\$1,295





## Communications


### Telex Radio Dispatch Certification Training

<b>Content</b>	<ul style="list-style-type: none"> <li>▪ Why RoIP?</li> <li>▪ Telex Dispatch products</li> <li>▪ Sample configurations and case studies</li> <li>▪ Networking terms</li> <li>▪ Multicast solutions</li> <li>▪ C-Soft basic</li> <li>▪ Introduction to IP-223</li> <li>▪ C-Soft continued</li> <li>▪ FleetSynch or SIP</li> <li>▪ C-Soft global parameters</li> <li>▪ Network Recorder</li> <li>▪ Telex System Manager</li> <li>▪ Hard consoles</li> <li>▪ Intermediate IP-223</li> <li>▪ After training support</li> </ul>
<b>Purpose</b>	<p>This comprehensive course covers the Telex Radio Dispatch family of products. It covers installation, maintenance, and troubleshooting of networked radio communication systems, and information necessary to pass the Telex RoIP certification exam. It concentrates on the C-Soft software program, including designing a complete console and connecting it to the network with the IP-223 product.</p>
<b>No. of participants</b>	Minimum of 3    Maximum of 10
<b>Duration</b>	3 Days
<b>Location</b>	Bosch Training Centers
<b>CEU Credit</b>	RoIP Certification
<b>Costs</b>	<p>Class cost at Bosch facility: \$595,    Off site class cost: \$895,</p> <p>Recertification cost: \$300</p>



## Communications

### Electro-Voice IRIS-Net Technical Certification Training

<b>Content</b>	<ul style="list-style-type: none"> <li>▪ In-depth analysis of all IRIS-Net compatible devices</li> <li>▪ CAN-Bus networks and best practices</li> <li>▪ IP Networks</li> <li>▪ CobraNet and Dante design and configuration</li> <li>▪ NetMax DSP design and task engine programming</li> <li>▪ Device configuration and options</li> <li>▪ IRIS-Net Project generator</li> <li>▪ Electro-Voice FIR-Drive technology</li> <li>▪ PWS wall controllers</li> <li>▪ TPI touch screen interfaces</li> <li>▪ Peak &amp; TEMP limiter overview</li> <li>▪ GUI creation and programming</li> <li>▪ Device maintenance and updates</li> <li>▪ System Supervision and loudspeaker impedance sweeps</li> <li>▪ IRIS-Net and Systune</li> <li>▪ Hands-on time with IRIS-Net hardware</li> </ul>	
<b>Prerequisites</b>	Strong audio background, basic networking skills, an understanding of sound system design and concepts, and knowledge of Windows operating systems	
<b>Target audience</b>	AV contractors, Installers, Production companies, System engineers	
<b>Purpose</b>	This comprehensive course covers IRIS-Net software suite and compatible networked devices. It is a hardware and software hands-on course. It covers installation, maintenance, and troubleshooting of networked audio systems, and information necessary to pass the IRIS-Net certification exam. Successful completion of this course includes designing and programming a complete sound system.	
<b>No. of participants</b>	Minimum of 3    Maximum of 10	
<b>Duration</b>	5 Days	
<b>Location</b>	Minneapolis (Burnsville), MN	
<b>CEU Credits</b>	16 InfoComm RU's	
<b>Cost</b>	Class requires compliance with the current Cancellation Policy	



## Communications

### Conferencing Certified Dealer Training

#### Content

- Configuration Of CCS 900
- Product Overview/Technical Information
- System Design fundamentals
- DCN technology
- How to design and calculate a system
- Explanation of the system hardware
- Installing and Using the DCN calculation program
- Installation and configuration of DCN Classic software modules
- Installation and configuration of DCN Suite software modules
- Configuration & Setup Of DCN NG Wireless System
- CCTV Camera Integration
- Select settings on the main-menu of the CCU
- Operating of Delegate & Chairman Unit
- Programming of Interpreter Desks
- Configuration & Programming Of Integrus Language Distribution System



#### Prerequisites

Basic knowledge of congress systems

#### Target Audience

Technical Support Engineers, Design Engineers

#### Purpose

This comprehensive course covers the Bosch Conferencing hardware and software. It is a technical course that introduces system design, basic programming, and installation tactics. The product families it covers include the Integrus, DCN Next Generation, DCN Wireless and CCS800/900.

#### No. of participants

Minimum of 3    Maximum of 10

#### Duration

3 Days

#### Location

Bosch Training Centers

#### CEU Credits

15 InfoComm RU's

#### Cost

Class requires compliance with the current Cancellation Policy



## Communications

### Praesideo Technical Training

<b>Content</b>	<ul style="list-style-type: none"> <li>▪ Introduction to Praesideo</li> <li>▪ Network architecture</li> <li>▪ System components</li> <li>▪ PC Connections</li> <li>▪ Software: Installation and Updates</li> <li>▪ Recording and setting messages</li> <li>▪ Configuration</li> <li>▪ Power consumption</li> <li>▪ System bus powering</li> <li>▪ PC Call Station</li> <li>▪ MCI/BAM</li> <li>▪ CobraNet Basics</li> <li>▪ Network Basics</li> <li>▪ CobraNet Configuration</li> </ul>
<b>Purpose</b>	<p>This course is designed for audio system consultants and integrators who need to develop basic programming, system design, and installation abilities. It is a hardware and software hands-on course, complimented with network architecture theories and installation tactics.</p>
<b>No. of participants</b>	<p>Minimum of 3      Maximum of 10</p>
<b>Duration</b>	<p>4 Days</p>
<b>Location</b>	<p>Bosch Training Centers</p>
<b>CEU Credits</b>	<p>12.5 InfoComm RU's</p>
<b>Cost</b>	<p>Class requires compliance with the current Cancellation Policy</p>



## Fire Systems

### FPD-7024 Fire Control Panel

<b>Content</b>	<ul style="list-style-type: none"> <li>▪ FPD-7024 FACP Product Overview</li> <li>▪ FPD-7024 FACP Hardware</li> <li>▪ FPD-7024 FACP MUX Devices</li> <li>▪ FPD-7024 FACP Keypad Programming</li> <li>▪ FPD-7024 FACP RPS Programming</li> <li>▪ FPD-7024 FACP System Operation</li> </ul>
<b>Prerequisites</b>	<p>Basic understanding of fire system technology</p> <p>Completion of Bosch RPS course strongly recommended</p> <p>Completion of Basic Networking and Basic PC Skills</p> <p>Completion of Conettix IP course recommended if FPD-7024 FACP are to be networked to D6600 or D6100 receiver</p>
<b>Target Audience</b>	This class is suitable for installers, service technicians, or panel programmers.
<b>Purpose</b>	This course will provide in-depth instruction on installation, programming, and operation of the Bosch FPD 7024 Fire Alarm Control Panel.
<b>No. of participants</b>	Minimum of 3      Maximum of 8
<b>Duration</b>	0.5 Day
<b>Location</b>	Bosch Training Centers
<b>Practical Content</b>	At least 40% hands-on
<b>CEU Credits</b>	None available
<b>Cost</b>	Class requires compliance with the current Cancellation Policy





## Intrusion

### Conettix IP

<b>Content</b>	<ul style="list-style-type: none"> <li>▪ Network Basics</li> <li>▪ Conettix IP Overview</li> <li>▪ Field Installation</li> <li>▪ Central Station Installation and Operation</li> </ul>
<b>Prerequisites</b>	<p>Successful completion of the G Series course.</p> <p>Hands-on experience using troubleshooting equipment, including multimeters wire strippers and screwdrivers.</p> <p>Students should also have basic PC skills.</p>
<b>Target Audience</b>	This class is suitable for installers, service technicians, or project managers.
<b>Purpose</b>	This course will provide instruction on networking basics, an in-depth instruction on the features and capabilities, hardware installation processes, programming, setting up, troubleshooting, and interpreting messages communicated by Conettix IP. The course also presents Central Station personnel with the skills needed to respond appropriately to messages communicated via a network from hardware in the field to the Conettix IP Receiver.
<b>No. of participants</b>	Minimum of 3    Maximum of 8
<b>Duration</b>	1 Day
<b>Location</b>	Bosch Training Centers
<b>Practical Content</b>	At least 50% hands-on
<b>CEU Credits</b>	0.8
<b>Cost</b>	Class requires compliance with the current Cancellation Policy



## Intrusion

### G Series Control Panel with RPS

<b>Content</b>	<ul style="list-style-type: none"> <li>▪ RPS Overview</li> <li>▪ RPS System Requirements and Software Installation</li> <li>▪ RPS System Configuration, Creating, and Managing Accounts</li> <li>▪ RPS Connecting and Programming</li> <li>▪ G Series Overview and Features</li> <li>▪ G Series Operating the Keypad and Commands</li> <li>▪ G Series Installation and Hardware</li> <li>▪ G Series Programming</li> </ul>
<b>Prerequisites</b>	<p>Hands-on experience using troubleshooting equipment, including multimeters, wire strippers and screwdrivers.</p> <p>Students should also have basic PC skills.</p>
<b>Target Audience</b>	This class is suitable for installers, service technicians, or project managers.
<b>Purpose</b>	This course will introduce you to the basics of the G Series control panel features and how the G Series control panel connects to other modules and its function within an end-to-end Bosch security system. It will also introduce you to the basics of the RPS application, including the user interface features, operator control functions and system application.
<b>No. of participants</b>	Minimum of 3 Maximum of 8
<b>Duration</b>	3 Days
<b>Location</b>	Bosch Training Centers
<b>Practical Content</b>	At least 50% hands-on
<b>CEU Credits</b>	1.6
<b>Cost</b>	Class requires compliance with the current Cancellation Policy





## Video Solutions

### DiBos 8 and Storage

<b>Content</b>	<ul style="list-style-type: none"> <li>▪ CCTV Basic Concepts</li> <li>▪ DiBos 8 Overview - Features and Benefits</li> <li>▪ Hardware Connections</li> <li>▪ Windows XP Administration</li> <li>▪ Storage/Disk Array Setup</li> <li>▪ Configuration</li> <li>▪ Live and Playback Modes</li> <li>▪ View and Control via Internet Explorer</li> <li>▪ Remote Software Installation and Operation</li> <li>▪ Service and Troubleshooting</li> </ul>
<b>Prerequisites</b>	<p>Basic computer skills.</p> <p>Successful completion of the Bosch IP Encoders course.</p>
<b>Target Audience</b>	This class is suitable for installers, service technicians, or project managers.
<b>Purpose</b>	This course will introduce you to the basic system features, functionality, installation, operation, configuration, and troubleshooting of the DiBos Digital Video Recorders as well as setting up, configuring, and recording to a Bosch SCSI Raid Array. This includes basic Raid Training, in particular Raid 5, proper connection and termination to the DiBos.
<b>No. of participants</b>	Minimum of 3    Maximum of 8
<b>Duration</b>	1.5 Days
<b>Location</b>	Bosch Training Centers
<b>Practical Content</b>	At least 70% hands-on
<b>CEU Credits</b>	1.2
<b>Cost</b>	Class requires compliance with the current Cancellation Policy



## Video Solutions

### Bosch DLA 1200/1400 Video Storage Appliance

<b>Content</b>	<ul style="list-style-type: none"> <li>▪ Bosch Encoder Technical Aspects</li> <li>▪ RAID and iSCSI Fundamentals</li> <li>▪ VRM Fundamentals</li> <li>▪ 1200 and 1400 Basics</li> <li>▪ Parts Replacement and Rebuilds</li> <li>▪ BVIP Lite Suite 3.2</li> <li>▪ Final Exam</li> </ul>
<b>Prerequisites</b>	Read Bosch's Networking Essentials Handbook or complete the eLearning Network Basics Course
<b>Target Audience</b>	This class is suitable for installers, service technicians, or project managers.
<b>Purpose</b>	This course provides the core competencies and knowledge an integrator or installer needs to successfully install and configure Bosch DLA 1200/1400 Video Appliance Installation.
<b>No. of participants</b>	Minimum of 3    Maximum of 8
<b>Duration</b>	3 Days
<b>Location</b>	Bosch Training Centers
<b>CEU Credits</b>	None available
<b>Cost</b>	Class requires compliance with the current Cancellation Policy





## Video Solutions

### Allegiant Matrix Switchers

<b>Content</b>	<ul style="list-style-type: none"> <li>▪ Allegiant Overview - Features and Benefits</li> <li>▪ Different Models Overview</li> <li>▪ Allegiant System Accessories</li> <li>▪ Software</li> <li>▪ Application</li> </ul>
<b>Prerequisites</b>	Basic computer skills.
<b>Target Audience</b>	This class is suitable for installers, service technicians, or project managers.
<b>Purpose</b>	This course will provide in-depth instruction on installation, programming, and operation of the Bosch Allegiant Matrix Switcher Systems.
<b>No. of participants</b>	Minimum of 3    Maximum of 8
<b>Duration</b>	2 Days
<b>Location</b>	Ontario (Rancho Cucamonga), CA and Lancaster, PA
<b>Practical Content</b>	At least 70% hands-on
<b>CEU Credits</b>	None available
<b>Cost</b>	Class requires compliance with the current Cancellation Policy



## Video Solutions

### LTC 8900

<b>Content</b>	<ul style="list-style-type: none"> <li>▪ Matrix Switchers</li> <li>▪ Allegiant Matrix Switching System</li> <li>▪ LTC 8900 Components and Theory</li> <li>▪ PC Software Information</li> <li>▪ Troubleshooting</li> <li>▪ Allegiant Special Topics</li> </ul>
<b>Prerequisites</b>	Successful completion of Bosch Allegiant Matrix Switching Systems class.
<b>Target Audience</b>	This class is suitable for installers, service technicians, or project managers.
<b>Purpose</b>	This course will provide in-depth instruction on installation, programming, and operation of the Bosch LTC8900 Matrix Switcher Systems.
<b>No. of participants</b>	Minimum of 3    Maximum of 8
<b>Duration</b>	1 Day
<b>Location</b>	Ontario (Rancho Cucamonga), CA and Lancaster, PA
<b>CEU Credits</b>	None available
<b>Cost</b>	Class requires compliance with the current Cancellation Policy



## Video Solutions

## IP Encoders and Cameras with System Design and VRM

## Content

- Networking 101
- Bosch Video IP Product Overview
- Software Installation
- Encoder Detection and Configuration
- Encoder Exercises and Troubleshooting
- Bosch Recording Options Overview
- Bosch Recording Options Overview
- RAID 101
- BASIC Retention Concepts
- NVR
- iSCSI Concepts
- VRM Installation and Configuration
- Advanced Design and Network Considerations



## Prerequisites

**IP Encoders:** Read Bosch's Networking Essentials Handbook

**System Design/VRM:** Pass the first day of class on IP Encoders and Cameras

## Target Audience

This class is suitable for technicians, project managers, IT professionals, or sales engineers.

## Purpose

This course provides the core competencies and knowledge an integrator or installer needs to successfully install and configure Bosch Video IP Encoders and Cameras as well as design and manage video storage systems using Bosch Video over IP products (BVIP). The course includes product demonstrations, in-depth configurations, hardware installation, software overview, troubleshooting, RAID basic concepts, iSCSI concepts, Video Retention Calculations, Bosch Recording Manager (VRM) and edge recording concepts.

## No. of participants

Minimum of 3      Maximum of 8

## Duration

3 Days

## Location

Bosch Training Centers

## Practical Content

At least 70% hands-on

## CEU Credits

None available

## Cost

Class requires compliance with the current Cancellation Policy



## Video Solutions

### Bosch Video Management System

<b>Content</b>	<ul style="list-style-type: none"> <li>▪ Networking 101 Refresher</li> <li>▪ Encoder Technical Aspects</li> <li>▪ BVMS Architecture</li> <li>▪ BVMS Licensing and Machine Prerequisites</li> <li>▪ Encoder Detection and Configuration (Manager)</li> <li>▪ BVMS Configuration Client (First Steps)</li> <li>▪ Logical Tree</li> <li>▪ Users and Groups</li> <li>▪ Alarms and Events</li> <li>▪ Operator Client</li> <li>▪ VRM Concepts</li> <li>▪ VRM Configuration</li> </ul>
<b>Prerequisites</b>	Basic computer skills.
<b>Target Audience</b>	This class is suitable for installers, service technicians, or project managers.
<b>Purpose</b>	This course provides the core competencies and knowledge an integrator or installer needs to successfully install and configure Bosch Video Management System (BVMS). This course includes product demonstrations, in depth configurations, hardware installation, software overview, and troubleshooting.
<b>No. of participants</b>	Minimum of 3      Maximum of 8
<b>Duration</b>	3 Days
<b>Location</b>	Bosch Training Centers
<b>Practical Content</b>	At least 70% hands-on
<b>CEU Credits</b>	None available
<b>Cost</b>	Class requires compliance with the current Cancellation Policy



## Video Solutions

**IP Encoders and Cameras with VIDOS Administration**

<b>Content</b>	<ul style="list-style-type: none"> <li>▪ BVIP Technical Aspects</li> <li>▪ Encoder Detection and Configuration</li> <li>▪ Encoder Exercises and Troubleshooting</li> <li>▪ RAID 101</li> <li>▪ iSCSI Concepts</li> <li>▪ PC and Servers</li> <li>▪ General VIDOS Functionality Overview</li> <li>▪ VIDOS Mapping</li> <li>▪ Alarm Configuration</li> <li>▪ VIDOS Server</li> <li>▪ Decoders and Monitor Wall</li> <li>▪ Virtual Matrix</li> <li>▪ Video Playback and Export</li> </ul>
<b>Prerequisites</b>	Bosch Networking Essentials (Reading Material).
<b>Target Audience</b>	This class is suitable for technicians, project managers, and IT professionals.
<b>Purpose</b>	This course provides the core competencies and knowledge an integrator or installer needs to successfully install and configure Bosch Video IP Encoders and Cameras as well as set-up and manage VIDOS, along with other applications such as Archive Player and Configuration Manager. The course includes product demonstrations, in depth configurations, hardware installation, software overview, troubleshooting, application management and deployment of VIDOS, “Edge Recording”, and complimentary applications such as Archive Player.
<b>No. of participants</b>	Minimum of 3      Maximum of 8
<b>Duration</b>	3 Days
<b>Location</b>	Bosch Training Centers
<b>CEU Credits</b>	None available
<b>Cost</b>	Class requires compliance with the current Cancellation Policy





## Video Solutions

### Bosch VIDOS Administration and IVA

<b>Content</b>	<ul style="list-style-type: none"> <li>▪ PC and Servers</li> <li>▪ Software Installation</li> <li>▪ General VIDOS Overview</li> <li>▪ VIDOS Fundamentals</li> <li>▪ Site Maps</li> <li>▪ Basic and Advanced Alarm Configurations</li> <li>▪ VIDOS Deployment Options</li> <li>▪ Tours and Monitor Wall</li> <li>▪ Video Playback and Export</li> <li>▪ IVA 4.0 First Steps</li> <li>▪ IVA Tasks</li> </ul>
<b>Prerequisites</b>	Bosch Encoder Course (recommended)
<b>Target Audience</b>	This class is suitable for technicians, project managers, and IT professionals.
<b>Purpose</b>	This VIDOS Administration module provides the knowledge integrators and system administrators need to set-up and manage VIDOS, along with other applications such as Archive Player Configuration Manager, Virtual Matrix, Automation Interface, and Monitor Wall. The IVA 4.0 module of the course provides the knowledge integrators and systems administrators need to successfully set up Intelligent Video Analytics (IVA). This includes live scenarios as well as post-motion forensic searches using Archive Player.
<b>No. of participants</b>	Minimum of 3      Maximum of 8
<b>Duration</b>	3 Days
<b>Location</b>	Bosch Training Centers
<b>Practical Content</b>	At least 80% hands-on
<b>CEU Credits</b>	None available
<b>Cost</b>	Class requires compliance with the current Cancellation Policy



## Video Solutions

### Extreme CCTV and Video Foundations

<b>Content</b>	<ul style="list-style-type: none"> <li>▪ CCTV Components and Light Concepts</li> <li>▪ Light Color and Math</li> <li>▪ Camera Basics</li> <li>▪ Lens Basics</li> <li>▪ Infrared Fundamentals</li> <li>▪ How to Specify a Job</li> <li>▪ Illuminator Products</li> <li>▪ Extreme Cameras</li> <li>▪ License Plate Capture Cameras</li> <li>▪ MIC Cameras</li> </ul>
<b>Prerequisites</b>	Basic computer skills
<b>Target Audience</b>	This class is suitable for installers, service technicians, and project managers.
<b>Purpose</b>	This course will introduce you to the basics of Extreme CCTV and video. This course will feature CCTV components and light concepts, camera and lens basics, infrared fundamentals, illuminator products, as well as extreme, license plate capture, and MIC cameras.
<b>No. of participants</b>	Minimum of 3      Maximum of 8
<b>Duration</b>	2.5 Days
<b>Location</b>	Bosch Training Centers
<b>Practical Content</b>	At least 60% hands-on
<b>CEU Credits</b>	None available
<b>Cost</b>	Class requires compliance with the current Cancellation Policy



## Online Learning Courses

### eLearning: Access/Systems Courses

#### AEC 2.1 Access Easy Controller

<b>Content</b>	<ul style="list-style-type: none"> <li>▪ Product Overview</li> <li>▪ Hardware Installation</li> <li>▪ Initial Controller Configuration</li> <li>▪ System Configuration</li> <li>▪ Video Features</li> <li>▪ Utility Programs</li> <li>▪ Test</li> </ul>
<b>Prerequisites</b>	Familiarity with basic networking concepts, a firm understanding of PC and Windows Operating Systems, and card access installation experience is helpful, but not required.
<b>Target Audience</b>	The Access Easy Controller 2.1 Online Training is designed for dealers and system installers of Access Easy Controller.
<b>Purpose</b>	<p>At the conclusion of the AEC 2.1 Access Easy Controller eLearning Course you should be able to:</p> <ul style="list-style-type: none"> <li>Describe the features of AEC</li> <li>Identify appropriate applications for AEC</li> <li>Discuss the benefits of the AEC system</li> </ul>
<b>Duration</b>	3 hours
<b>Location</b>	<a href="http://www.boschsecurity.us/en-us/service/training/aec2_1">http://www.boschsecurity.us/en-us/service/training/aec2_1</a>
<b>CEU Credits</b>	None available
<b>Cost</b>	There is no charge to complete eLearning Courses



## eLearning: Access/Systems Courses

### Access Personal Edition (PE)

<b>Content</b>	<ul style="list-style-type: none"> <li>▪ System Overview</li> <li>▪ Installing Access PE Software</li> <li>▪ IP Configuration</li> <li>▪ Using Access PE</li> <li>▪ Card Personalization Configuration</li> <li>▪ Badge Designer</li> <li>▪ Upgrading Access PE</li> <li>▪ Test</li> </ul>
<b>Prerequisites</b>	Basic knowledge of access control systems terminology and components and the requisite technical skills to install system hardware and software.
<b>Target Audience</b>	The Access Personal Edition (PE) Online Training is designed for dealers and system installers of Access Easy Controller.
<b>Purpose</b>	<p>At the conclusion of the Access Personal Edition (PE) eLearning Course you should be able to:</p> <ul style="list-style-type: none"> <li>Identify the features and capabilities of the Access PE system</li> <li>Install Access PE software</li> <li>Perform an AMC IP configuration</li> <li>Use Configurator to configure Access PE settings</li> <li>Use Card Personalization Configuration to configure Badge Designer settings</li> <li>Design and create a badge</li> </ul>
<b>Duration</b>	3 hours
<b>Location</b>	<a href="http://www.boschsecurity.us/en-us/service/training/ape">http://www.boschsecurity.us/en-us/service/training/ape</a>
<b>CEU Credits</b>	0.3
<b>Cost</b>	There is no charge to complete eLearning Courses



## eLearning: Fire Courses

### FPD-7024 Fire Alarm Control Panel

<b>Content</b>	<ul style="list-style-type: none"> <li>▪ Product Overview</li> <li>▪ Hardware Installation</li> <li>▪ Option Bus and Off-Board Addressable Devices</li> <li>▪ Keypad / Command Center User Operation</li> <li>▪ Keypad / Command Center Programming Basics</li> <li>▪ RPS Programming Basics</li> <li>▪ Test</li> </ul>
<b>Prerequisites</b>	Basic knowledge of fire system terminology and components and the requisite technical skills to install system hardware and software.
<b>Target Audience</b>	The FPD-7024 Fire Alarm Control Panel Online Training is designed specifically for dealers and system installers.
<b>Purpose</b>	<p>At the conclusion of the FPD-7024 Fire Alarm Control Panel eLearning Course you should be able to:</p> <ul style="list-style-type: none"> <li>Describe the FPD-7024 Fire Alarm Control Panel</li> <li>List key features of the panel</li> <li>Identify appropriate applications for the FPD-7024 Fire Alarm Control Panel</li> <li>Identify various system options and their part numbers</li> </ul>
<b>Duration</b>	6 hours
<b>Location</b>	<a href="http://www.boschsecurity.us/en-us/Service/Training/FPD7024">http://www.boschsecurity.us/en-us/Service/Training/FPD7024</a>
<b>CEU Credits</b>	None available
<b>Cost</b>	There is no charge to complete eLearning Courses



## eLearning: Fire Courses

---

**FPA-1000 Fire Alarm Control Panel**


---

<b>Content</b>	<ul style="list-style-type: none"> <li>▪ Product Overview</li> <li>▪ Hardware Installation</li> <li>▪ Option Bus and SLC Device Installation</li> <li>▪ User Operations</li> <li>▪ Keypad / Command Center Programming</li> <li>▪ Browser-Based Operation and Programming</li> <li>▪ Test</li> </ul>
<b>Prerequisites</b>	Basic knowledge of fire system terminology and components and the requisite technical skills to install system hardware and software.
<b>Target Audience</b>	The FPA-1000 Fire Alarm Control Panel Online Training is designed specifically for dealers and system installers.
<b>Purpose</b>	<p>At the conclusion of the FPA-1000 Fire Alarm Control Panel eLearning Course you should be able to:</p> <ul style="list-style-type: none"> <li>Describe the FPA-1000 Fire Alarm Control Panel</li> <li>List key features of the panel</li> <li>Identify appropriate applications for the FPA-1000 Fire Alarm Control Panel</li> <li>Identify various system options and their part numbers</li> </ul>
<b>Duration</b>	4 hours
<b>Location</b>	<a href="http://www.boschsecurity.us/en-us/service/training/fpa1000">http://www.boschsecurity.us/en-us/service/training/fpa1000</a>
<b>CEU Credits</b>	None available
<b>Cost</b>	There is no charge to complete eLearning Courses



## eLearning: General Knowledge Course

### Network Basics

<b>Content</b>	<ul style="list-style-type: none"> <li>▪ Course Overview</li> <li>▪ IP Addressing and Subnetting</li> <li>▪ Topologies and Cabling</li> <li>▪ The Open System Interconnection (OSI) Model</li> <li>▪ Network Troubleshooting Command, Ports, and Selection of Network Switches</li> </ul>
<b>Prerequisites</b>	None
<b>Target Audience</b>	The Network Basics Online Training is designed specifically for dealers and system installers.
<b>Purpose</b>	<p>At the conclusion of the Network Basics eLearning Course you should be able to:</p> <ul style="list-style-type: none"> <li>Describe IP addressing fundamentals</li> <li>Describe network topologies and transmission mediums</li> <li>Discuss the Open System Interconnection (OSI) model</li> <li>Troubleshoot ports and interface problems</li> <li>Describe how to select network switches</li> </ul>
<b>Duration</b>	1.5 hours
<b>Location</b>	<a href="http://www.boschsecurity.us/en-us/service/training/network_basics">http://www.boschsecurity.us/en-us/service/training/network_basics</a>
<b>CEU Credits</b>	None available
<b>Cost</b>	There is no charge to complete eLearning Courses



## eLearning: Intrusion Courses

### G Series Control Panels: GV3 What's New

<b>Content</b>	<ul style="list-style-type: none"> <li>▪ What is GV3?</li> <li>▪ G Series Control Panel Models</li> <li>▪ Feel the Need for Speed?</li> <li>▪ Communications</li> <li>▪ Improved Reliability</li> <li>▪ Installation and Service</li> </ul>
<b>Prerequisites</b>	A basic knowledge of G Series panels and components.
<b>Target Audience</b>	The GV3 What's New Online Training is designed specifically for dealers and system installers.
<b>Purpose</b>	The training focuses on differences between the GV2 and GV3 Intrusion Panels.
<b>Duration</b>	30 minutes
<b>Location</b>	<a href="http://www.boschsecurity.us/en-us/service/training/gv3">http://www.boschsecurity.us/en-us/service/training/gv3</a>
<b>CEU Credits</b>	None available
<b>Cost</b>	There is no charge to complete eLearning Courses



## eLearning: Intrusion Courses

**G Series Control Panels: GV2**

<b>Content</b>	<ul style="list-style-type: none"> <li>▪ Introduction</li> <li>▪ Overview</li> <li>▪ Hardware</li> <li>▪ SDI</li> <li>▪ Off-Board Points/Relays</li> <li>▪ User Operation</li> <li>▪ RPS Basics</li> <li>▪ Skills Test</li> </ul>
<b>Prerequisites</b>	A basic knowledge of security systems and the requisite technical skills to install system hardware and software.
<b>Target Audience</b>	The GV2 Online Training is intended for dealers and system installers.
<b>Purpose</b>	This course is designed to give an overview of the GV2 control panel and its capabilities.
<b>Duration</b>	4 hours
<b>Location</b>	<a href="http://66.77.255.104/www.boschsecurity.us/en-us/Service/Training/gv2/">http://66.77.255.104/www.boschsecurity.us/en-us/Service/Training/gv2/</a>
<b>CEU Credits</b>	0.4
<b>Cost</b>	There is no charge to complete eLearning Courses



## eLearning: Intrusion Courses

### G Series Control Panels: GV2 User Operation

<b>Content</b>	<ul style="list-style-type: none"> <li>▪ Introduction</li> <li>▪ Resources for More Information</li> <li>▪ Arm the System</li> <li>▪ Disarm the System</li> <li>▪ Silence an Alarm</li> <li>▪ Clear Alarm Display Memory</li> <li>▪ Force Arm/Bypass Arm</li> <li>▪ System Commands and Functions</li> </ul>
<b>Prerequisites</b>	None
<b>Target Audience</b>	The GV2 User Operation Online Training is intended for end users who are operating the GV2 Intrusion Panel.
<b>Purpose</b>	<p>At the conclusion of the GV2 User Operation eLearning Course you should be able to:</p> <ul style="list-style-type: none"> <li>Arm and disarm the system</li> <li>Silence and clear an alarm</li> <li>Force arm/bypass a faulted point</li> <li>Identify and use key command functions</li> </ul>
<b>Duration</b>	45 minutes
<b>Location</b>	<a href="http://www.boschsecurity.us/en-us/service/training/gv2_user_operation">http://www.boschsecurity.us/en-us/service/training/gv2_user_operation</a>
<b>CEU Credits</b>	None available
<b>Cost</b>	There is no charge to complete eLearning Courses



## eLearning: Video Solutions Courses

### Digital Video Recorder 400 Series

<b>Content</b>	<ul style="list-style-type: none"> <li>▪ Course Overview</li> <li>▪ Product Overview</li> <li>▪ Hardware Installation</li> <li>▪ Configuration</li> <li>▪ User Operation</li> <li>▪ Remote Applications</li> <li>▪ Test</li> </ul>
<b>Prerequisites</b>	Basic knowledge of CCTV systems terminology and components, and the requisite technical skills to install system hardware and software.
<b>Target Audience</b>	The Digital Video Recorder 400 Series Online Training is intended for dealers and installers.
<b>Purpose</b>	<p>At the conclusion of the Digital Video Recorder 400 Series eLearning Course you should be able to:</p> <ul style="list-style-type: none"> <li>Describe the DVR 400 Series Video Recorder</li> <li>Describe the hardware installation on the unit</li> <li>Configure the detailed setup information</li> <li>Operate the DVR 400 Series Video Recorder</li> <li>Install and use the Remote Applications Software</li> </ul>
<b>Duration</b>	2 hours
<b>Location</b>	<a href="http://www.boschsecurity.us/en-us/service/training/DVR400">http://www.boschsecurity.us/en-us/service/training/DVR400</a>
<b>CEU Credits</b>	None available
<b>Cost</b>	There is no charge to complete eLearning Courses



## eLearning: Video Solutions Courses

### 700 Series Hybrid/Network Recorder

<b>Content</b>	<ul style="list-style-type: none"> <li>▪ Course Overview</li> <li>▪ Product Overview</li> <li>▪ Hardware Installation</li> <li>▪ Configuration</li> <li>▪ User Operations</li> <li>▪ Remote Applications</li> <li>▪ Test</li> </ul>
<b>Prerequisites</b>	Basic knowledge of Video Solution systems terminology and components and the requisite technical skills to install, configure, and use system hardware and software.
<b>Target Audience</b>	The 700 Series Hybrid/Network Recorder Online Learning is intended for dealers and installers.
<b>Purpose</b>	<p>At the end of the 700 Series Hybrid/Network Recorder eLearning Course you should be able to:</p> <ul style="list-style-type: none"> <li>Describe the 700 Series Video Recorder</li> <li>Describe the hardware installation on the unit</li> <li>Configure detailed setup information</li> <li>Operate the 700 Series Video Recorder</li> <li>Install and use the Remote Application Software</li> </ul>
<b>Duration</b>	2.5 hours
<b>Location</b>	<a href="http://training.boschsecurity.us/Courses/DVR700Course/">http://training.boschsecurity.us/Courses/DVR700Course/</a>
<b>CEU Credits</b>	None Available
<b>Cost</b>	There is no charge to complete eLearning Courses



## eLearning: Video Solutions Courses

### Divar XF Digital Video Recorder

<b>Content</b>	<ul style="list-style-type: none"> <li>▪ Introduction</li> <li>▪ Course Overview</li> <li>▪ Hardware Installation</li> <li>▪ System Settings</li> <li>▪ Camera and Recording Settings</li> <li>▪ User Operations</li> <li>▪ Remote PC Applications</li> <li>▪ Test</li> </ul>
<b>Prerequisites</b>	Basic knowledge of CCTV system terminology and components, and the requisite technical skills to install system hardware and software.
<b>Target Audience</b>	The Divar XF Digital Video Recorder Online Training is intended for dealers and installers.
<b>Purpose</b>	<p>At the end of the Divar XF Digital Video Recorder eLearning Course you should be able to:</p> <p>Install the Divar XF Hardware</p> <p>Configure the system setting for the Divar XF</p> <p>Set up cameras and define recording parameters for the Divar XF</p> <p>Utilize the remote PC applications</p>
<b>Duration</b>	4 hours
<b>Location</b>	<a href="http://66.77.255.104/www.boschsecurity.us/en-us/Service/Training/divarxftraining">http://66.77.255.104/www.boschsecurity.us/en-us/Service/Training/divarxftraining</a>
<b>CEU Credits</b>	0.4
<b>Cost</b>	There is no charge to complete eLearning Courses



## eLearning: Video Solutions Courses

### Bosch License Plate Capture Technology

<b>Content</b>	<ul style="list-style-type: none"> <li>▪ Course Overview</li> <li>▪ License Plate Capture and Recognition</li> <li>▪ REG License Plate Capture Camera Technology</li> <li>▪ Installing REG for License Plate Capture</li> <li>▪ Installing REG for License Plate Recognition systems</li> </ul>
<b>Prerequisites</b>	Basic knowledge of CCTV system terminology and components, and the requisite technical skills to install system hardware and software.
<b>Target Audience</b>	Bosch License Plate Capture Technology Online Training is intended for dealers and installers.
<b>Purpose</b>	<p>At the conclusion of the Bosch License Plate Capture Technology eLearning Course you should be able to:</p> <ul style="list-style-type: none"> <li>Describe the difference between License Plate Capture and Recognition</li> <li>Describe the REG License Plate Capture Camera technology</li> <li>Install REG for License Plate Capture</li> <li>Install REG for a License Plate Recognition system</li> </ul>
<b>Duration</b>	1 hour
<b>Location</b>	<a href="http://www.boschsecurity.us/en-us/service/training/lpr">http://www.boschsecurity.us/en-us/service/training/lpr</a>
<b>CEU Credits</b>	None available
<b>Cost</b>	There is no charge to complete eLearning Courses



## eLearning: Video Solutions Courses

### Introduction to Bosch HD Solutions

<b>Content</b>	<ul style="list-style-type: none"> <li>▪ Course Overview</li> <li>▪ Key Features of High Definition</li> <li>▪ SD, HD, and Megapixel Surveillance</li> <li>▪ Camera and Recording Settings</li> <li>▪ HD Applications</li> <li>▪ Bosch HD Solutions</li> </ul>
<b>Prerequisites</b>	Basic knowledge of CCTV system terminology and components, and the requisite technical skills to install system hardware and software.
<b>Target Audience</b>	The Introduction to Bosch HD Solutions Online Training is intended for dealers and installers.
<b>Purpose</b>	<p>At the conclusion of the Introduction to Bosch HD Solutions eLearning Course you should be able to:</p> <ul style="list-style-type: none"> <li>Define High Definition video</li> <li>Discuss the effects of: pixel resolutions, aspect ratio, scanning systems &amp; frame rate</li> <li>Identify differences between Standard Definition, High Definition, &amp; Megapixel surveillance</li> <li>Identify HD surveillance applications</li> <li>Explain why there is a need for HD video standards</li> <li>Describe the Bosch HD product portfolio</li> </ul>
<b>Duration</b>	1 hour
<b>Location</b>	<a href="http://www.boschsecurity.us/en-us/service/training/hd">http://www.boschsecurity.us/en-us/service/training/hd</a>
<b>CEU Credits</b>	None Available
<b>Cost</b>	There is no charge to complete eLearning Courses



<http://training.boschsecurity.us/Courses/?coid=1>



## eLearning: Video Solutions Courses

---

**Mastering the Art of Active-Infrared Night Vision**


---

<b>Content</b>	<ul style="list-style-type: none"> <li>▪ Night Vision Technologies</li> <li>▪ The Challenge of Effective Night Vision</li> <li>▪ The Next Generation: Black Diamond &amp; Constant Light</li> <li>▪ Cover Illumination &amp; Light Pollution</li> <li>▪ Enabling Low/No Light Function of Video Analytics</li> <li>▪ Reducing Bandwidth and Storage Requirements with IR</li> <li>▪ Optimizing Low/No Function of Megapixel Cameras</li> <li>▪ Preventing Low Light Motion Blur</li> <li>▪ Specifying Infrared Illuminators</li> <li>▪ Levels of Surveillance: DCRI</li> </ul>
<b>Prerequisites</b>	Basic knowledge of CCTV system terminology and components, and the requisite technical skills to install system hardware and software.
<b>Target Audience</b>	The Mastering the Art of Active-Infrared Night Vision Online Training is intended for dealers and installers.
<b>Purpose</b>	Mastering the Art of Active-Infrared Night Vision eLearning, addresses technical aspects of active-infrared night vision; providing security professionals with a solid technical foundation, the course will allow the effective application of active infrared for critical security projects, both analog and IP-based.
<b>Duration</b>	3 hours
<b>Location</b>	<a href="http://66.77.255.104/www.boschsecurity.us/en-us/Service/Training/activeinfrared">http://66.77.255.104/www.boschsecurity.us/en-us/Service/Training/activeinfrared</a>
<b>CEU Credits</b>	0.3
<b>Cost</b>	There is no charge to complete eLearning Courses



## Training Regulations

### Regulations

In order to enable organization of courses in a timely and efficient way, the following regulations apply:

- Course registrations are accepted only through the Security and Communications Training Academy website (<http://training.boschsecurity.us>).
- Confirmation of registration for a course will be sent upon the Training Academy's receipt of a completed Credit Card Authorization Form or Purchase Order.
- Bosch Security Systems has the right to cancel a course in the case of insufficient enrollment.
- Enrollment in a course can be cancelled by a participant up to 10 business days before the start of the course with no penalty. Later cancellations are charged the full cancellation fee (\$500.00). If no cancellation is indicated and a participant does not show for the class, the full cancellation fee (\$500.00) will be charged.
- It is permissible to send a substitute participant to the course, however, advance notification of the change is always appreciated.



## Policies and procedures

### a. Cancellation Policy

Beginning with classes scheduled for July 2009, the cancellation policy is as follows:

Registrant cancels with 10 or more business days in advance of the training course	No fee
Registrant cancels less than 10 business days before the training class begins	\$500.00 fee
Registrant is a "No Show" at the training course	\$500.00 fee
Registrant attends the training	No fee

### b. Evaluation

Each course is ended with a formal evaluation of the content and learning aspects. Participants can add their personal comments about the course on the evaluation.

### c. Certificate

All technical courses incorporate a test for participants. Upon successful completion of a course and associated assessments, a Bosch Security and Communications Training Academy Certificate is awarded.